

# ALBERT PARK

TO KERSAL WETLANDS

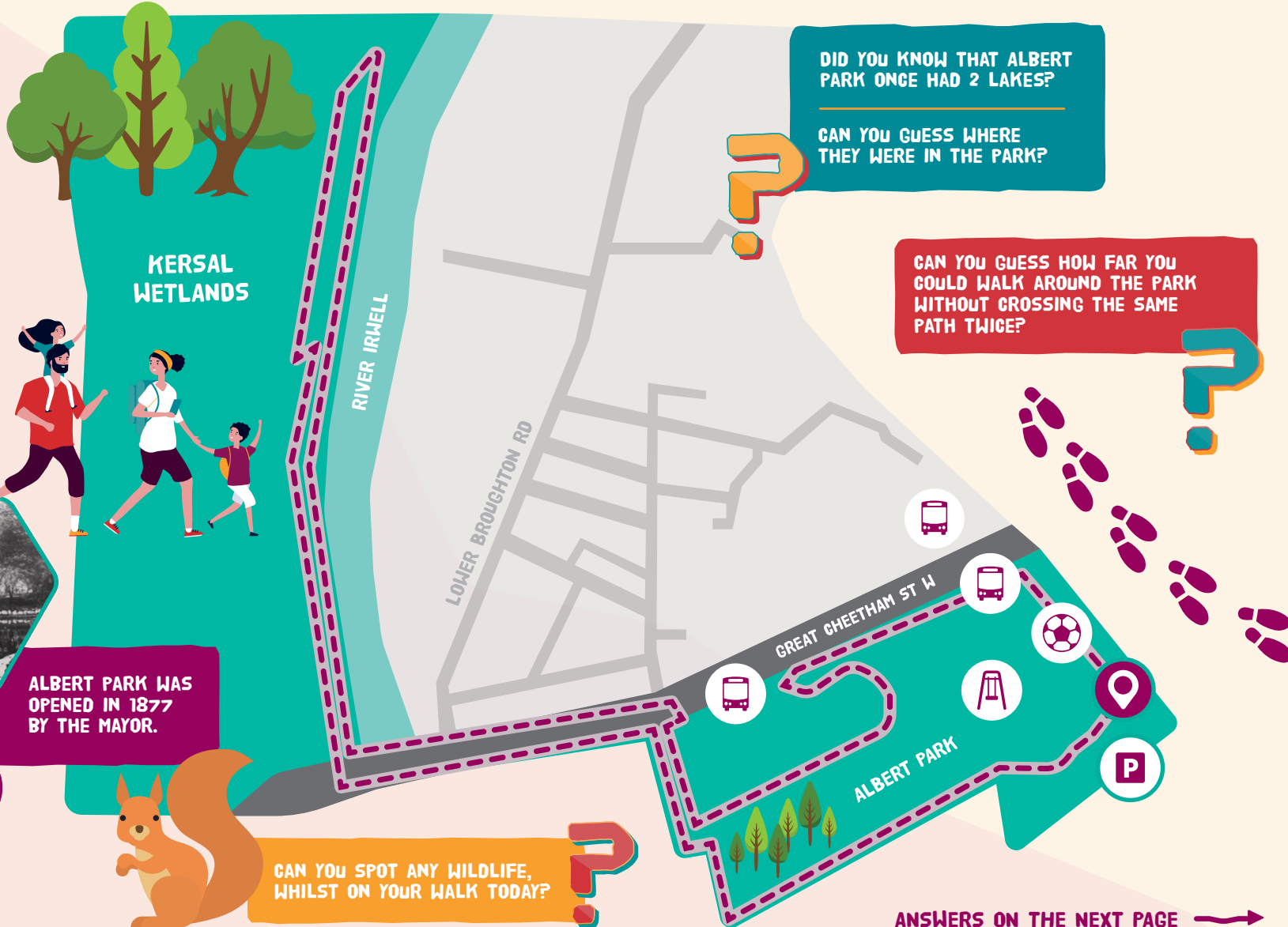
Grecian Street, Broughton, Salford M7 2JW

## WALK DISTANCE: 2.2 MILES



### MAP KEY:

- Start/Finish
- Car Park
- Children's Playground
- Bus Stop
- Sports Facilities
- Walk Route



DID YOU KNOW THAT ALBERT PARK ONCE HAD 2 LAKES?

CAN YOU GUESS WHERE THEY WERE IN THE PARK?

CAN YOU GUESS HOW FAR YOU COULD WALK AROUND THE PARK WITHOUT CROSSING THE SAME PATH TWICE?

ALBERT PARK WAS OPENED IN 1877 BY THE MAYOR.

CAN YOU SPOT ANY WILDLIFE, WHILST ON YOUR WALK TODAY?

ANSWERS ON THE NEXT PAGE →

# ALBERT PARK TO KERSAL WETLANDS

Grecian Street, Broughton, Salford M7 2JW



Follow **@FriendsOfAlbertPark** on Facebook to keep up with the latest news and events taking place on the park. Friends of Albert Park are a group of volunteers, who work together to improve the park and to create new developments.



## ANSWERS TO THE QUESTIONS

### CAN YOU GUESS HOW FAR YOU COULD WALK AROUND THE PARK WITHOUT CROSSING THE SAME PATH TWICE?

The walkways enabled the visitors to walk **5 miles** around the park, without crossing the same path twice.

This was particularly relevant due to Salford's increasing population and loss of green space and fresh air, due to the industrialisation of the city in the 1800s.

The layout and design of the park was directed by the head gardener at Peel Park, Henry Moore, who gave the flat piece of land some depth and character. The park was opened in **1877**.



### CAN YOU GUESS WHERE THE TWO LAKES WERE IN THE PARK?

The 2 lakes were added to the park in **1895**. One of the lakes was situated next to the car park that stands today and the larger lake was situated between Great Cheetham Street West and the bowling green.

However, the 2 lakes were drained and filled in around **1940**.

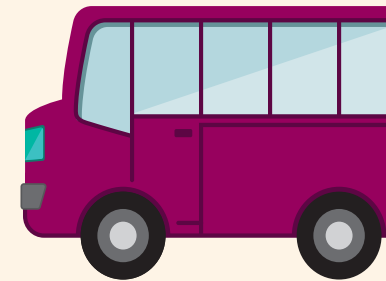
## GETTING THERE BY BUS



Bus stop on Great Cheetham Street West, with service **52**



Bus stop on Great Clowes Street, with services **97** and **98**



## AND DID YOU KNOW...

Football pitches and rooms available to hire Monday to Friday (9am-10pm).

Visit **Albert's of Salford's website to book:**

**WWW.ALBERTSOFSALFORD.ORG.UK**

## INFORMATION ABOUT INSPIRING COMMUNITIES TOGETHER

We are a charity working in Charlestown and Lower Kersal. We operate as a community anchor for the neighbourhood alongside delivery of services across Salford.

Please check out our website for details of our activities: [inspiringcommunitiestogether.co.uk/events](http://inspiringcommunitiestogether.co.uk/events) or call us on 0161 743 3625